

2021 Mountain Aire Luxury Motor Coach



A Recipe for Luxury

The luxurious 2021 Mountain Aire continues to improve to elevate your every experience. Starting with Comfort Drive™ steering to make navigating the roads easier, Mobileye® lane departure tracking now also comes standard.

Tire-pressure monitoring, electronic stability control, and OnGuard™ collision mitigation technology with adaptive cruise control are all watching out for your safety. Add the gorgeous full-paint Masterpiece™ finish, and you'll see why the Mountain Aire is a premier host.





Ibis full-paint Masterpiece™ finish

A Feast for the Eyes 2021 Mountain Aire

The 2021 Mountain Aire is bigger and better. The coach is now built exclusively on the Spartan® K3 Tag Axle chassis—boasting 500 horsepower and 1,695 lb./ft. of torque for easy uphill driving and towing. Beyond that, our former 40' models are now 41', allowing for larger rear bathrooms and showers. And with seven floor plans, three of which are new for 2021, you'll find an option that's right for you, whether you're hosting guests or enjoying it all to yourself.

For Entertaining, or Just Enjoying

Whether you're hosting guests or enjoying a quiet movie night, the Mountain Aire has all of the luxurious appointments you expect from Newmar. A retractable Samsung® 50" 4K LED TV, paired with a Bose® 700 soundbar and 500 series subwoofer, lets you play the game loud and clear, or enjoy music throughout the coach. Available reclining theater seats make relaxing easy—with a host of other seating options as well. The tile floor offers radiant electric heat for cool nights, while three 15M Penguin™ heat pump central air conditioners and wall-mounted sensors keep things cool when temperatures swing the other way. Plus, living room and dinette windows have been enlarged on specific floor plans to let in more natural light.



*Floor plan 4543 with Ibis décor and
Sable Maple high-gloss cabinetry*



Turn off lights, lower shades, raise the TV, and turn on accent lights with our new Theater Mode functionality.

Getting There is Getting Better

The captain's and passenger's seats in the Mountain Aire are made for comfortable travel. Both heated and upholstered in Ultraleather®, they're also both appointed with amenities. The captain's chair features dual 10" monitors equipped with Rand McNally navigation, with an option for a passenger side navigation monitor as well. Haptic feedback has been added to help the driver stay aware of surroundings—and that's in addition to the 360-degree camera system with predictive grid lines and tri-view rear camera. The passenger gets a queen-size seat with workstation and footrest.





Blending Form and Function

The galley in the Mountain Aire serves up the classic kitchen appointments of home with the beauty of a Newmar. Appliances include a Whirlpool® refrigerator, a 30" convection microwave, and a two-burner cooktop. Add an optional dishwasher, or a kitchen window to allow more light to stream in. Handmade maple cabinetry surrounds the super-polished solid surface countertops—and features raised-panel doors with soft-close hinges. And to ensure you've got everything you need, whether you're cooking for two or entertaining a crowd, a large pantry includes pull-out shelves for easy access.





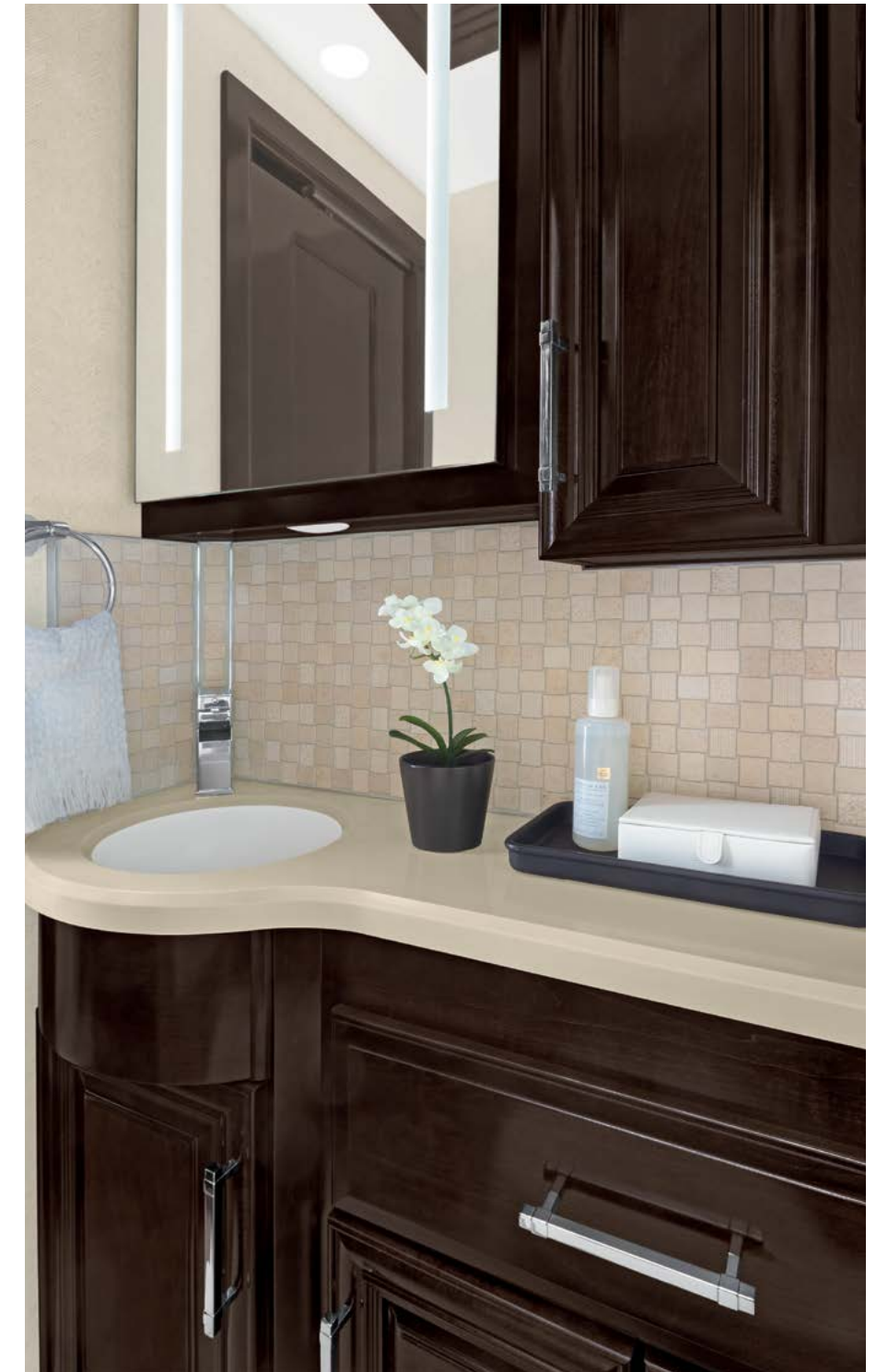
A Space for Solitude

At the end of the day, there's no better place to go for rest than the master suite of the Mountain Aire. Rear and mid-coach bedroom floor plans are available to best suit your needs. Regardless, you'll find a dresser with six large drawers and super-polished countertops and two wardrobes. For late-night entertainment, a Samsung® LED TV and Sony® Blu-ray player—plus you'll find a touchscreen control panel to oversee many of the coach's functionalities. A king-size bed comes with a plush pillow top mattress, or you can upgrade to a Sleep Number® adjustable mattress.



A Moment of Calm

A variety of master bath options abound in the Mountain Aire. By lengthening our former 40' models to 41', we've been able to add more space to our rear bathrooms. In these shorter models, you'll find a residential-sized 40" x 32" shower—and in some 45' models it's a spacious 50" x 34"—all with tiled walls and glass doors. Inside the showers are a fold-down seat and three-pump soap dispensers. An Aqua Miser® shower system keeps your warm water flowing. Additionally, an optional laundry station offers a stacked washer and dryer, plus a cedar-paneled wardrobe offers you space for your nicest clothes. The mid-ship half-bath available on most floor plans offers the same ease and comfort to guests.





Spacious Inside and Out

The Mountain Aire makes enjoying a meal—or just relaxing—in the great outdoors even nicer. Girard® Nova side awnings offer a reprieve from the sun on warm days, and a Dometic® freezer with a pull-out tray can keep everyone stocked on cool drinks. Host family and friends for an outdoor get-together with the optional outdoor entertainment package. With so much storage, you can bring along any gear you need: a lighted exterior baggage compartment, plus an optional power pass-through storage tray, offer easy access. Power baggage door locks and keyless entry door with a touch pad and doorbell offer security when you're inside. And it's all powered by a 12.5 kW Cummins Onan® diesel generator.

Exterior and Interior Décor



ARTISAN EXTERIOR

Awning Color: Charcoal Tweed



BARNSELY EXTERIOR

Awning Color: Linen Tweed



HAMDEN EXTERIOR

Awning Color: Charcoal Tweed



IBIS EXTERIOR

Awning Color: Linen Tweed



ARTISAN INTERIOR

a. Furniture/Fabric b. Flooring c. Counter Top



BARNSELY INTERIOR

a. Furniture/Fabric b. Flooring c. Counter Top



HAMDEN INTERIOR

a. Furniture/Fabric b. Flooring c. Counter Top



IBIS INTERIOR

a. Furniture/Fabric b. Flooring c. Counter Top



*Available in High Gloss or Matte Finish

Mountain Aire



4102

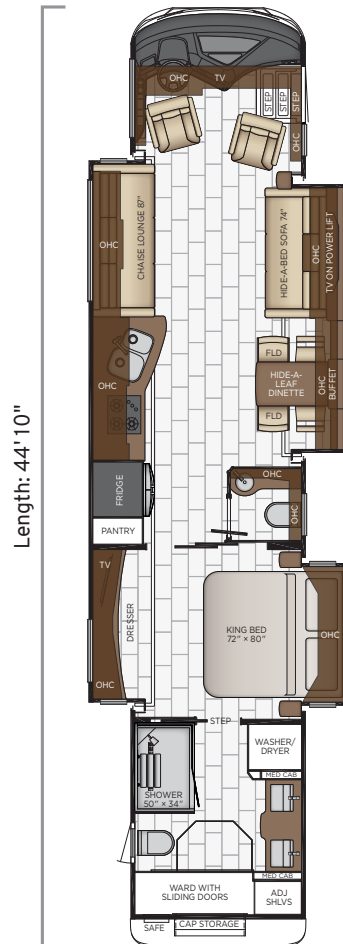
| | |
|---------------------|------------|
| Length | 41'10" |
| Width | 101.5" |
| App. Overall Height | 13'02" |
| Interior Width | 95.5" |
| Interior Height | 83" |
| Grey Tank | 80 gal. |
| Sewage Tank | 60 gal. |
| Water Tank | 105 gal. |
| Propane Tank | 22 gal. |
| Furnace | 50,000 btu |



4118

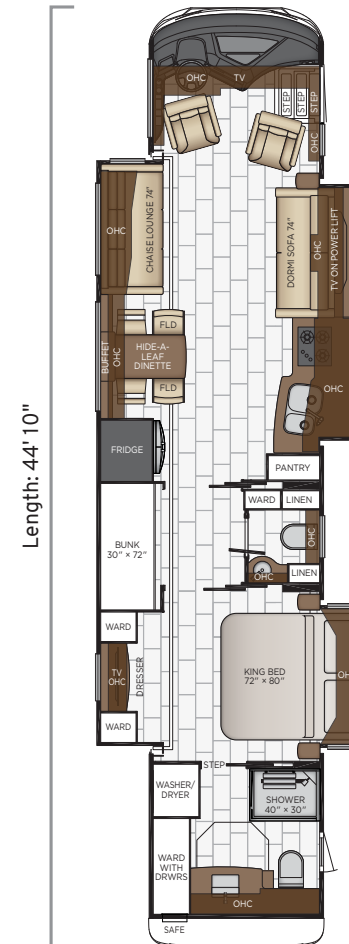
| | |
|---------------------|------------|
| Length | 41'10" |
| Width | 101.5" |
| App. Overall Height | 13'02" |
| Interior Width | 95.5" |
| Interior Height | 83" |
| Grey Tank | 80 gal. |
| Sewage Tank | 60 gal. |
| Water Tank | 105 gal. |
| Propane Tank | 22 gal. |
| Furnace | 50,000 btu |

Floor Plans



4533

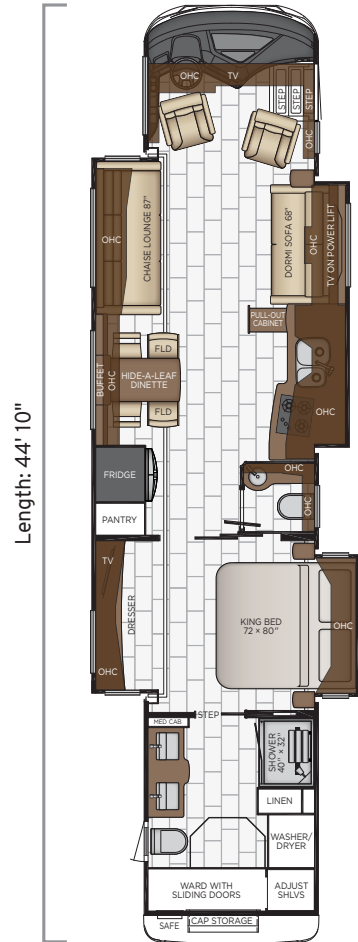
| | |
|---------------------|------------|
| Length | 44'10" |
| Width | 101.5" |
| App. Overall Height | 13'02" |
| Interior Width | 95.5" |
| Interior Height | 83" |
| Grey Tank | 80 gal. |
| Sewage Tank | 60 gal. |
| Water Tank | 105 gal. |
| Propane Tank | 22 gal. |
| Furnace | 50,000 btu |



4535

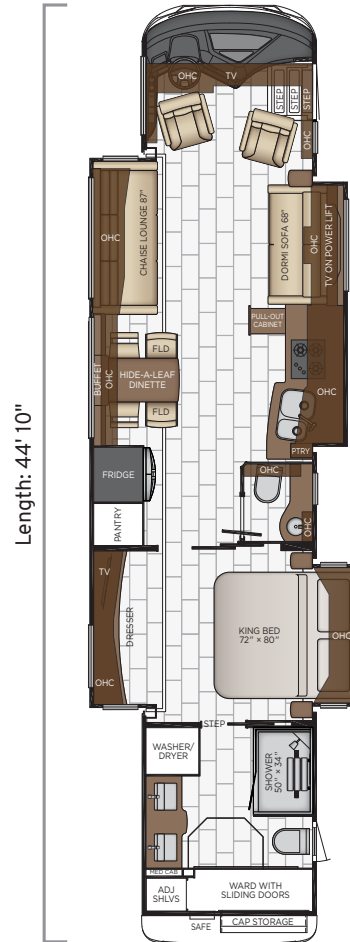
| | |
|---------------------|------------|
| Length | 44'10" |
| Width | 101.5" |
| App. Overall Height | 13'02" |
| Interior Width | 95.5" |
| Interior Height | 83" |
| Grey Tank | 80 gal. |
| Sewage Tank | 60 gal. |
| Water Tank | 105 gal. |
| Propane Tank | 22 gal. |
| Furnace | 50,000 btu |

Floor Plans



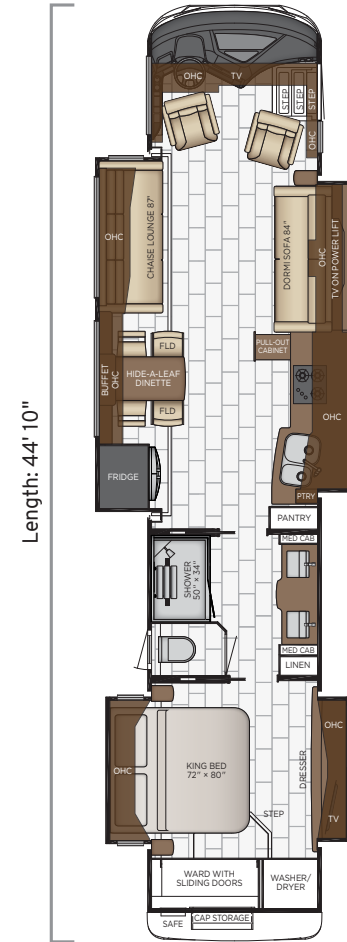
4543

| | |
|---------------------|------------|
| Length | 44'10" |
| Width | 101.5" |
| App. Overall Height | 13'2" |
| Interior Width | 95.5" |
| Interior Height | 83" |
| Grey Tank | 80 gal. |
| Sewage Tank | 60 gal. |
| Water Tank | 105 gal. |
| Propane Tank | 22 gal. |
| Furnace | 50,000 btu |



4551

| | |
|---------------------|------------|
| Length | 44'10" |
| Width | 101.5" |
| App. Overall Height | 13'2" |
| Interior Width | 95.5" |
| Interior Height | 83" |
| Grey Tank | 80 gal. |
| Sewage Tank | 60 gal. |
| Water Tank | 105 gal. |
| Propane Tank | 22 gal. |
| Furnace | 50,000 btu |



4583

| | |
|---------------------|------------|
| Length | 44'10" |
| Width | 101.5" |
| App. Overall Height | 13'2" |
| Interior Width | 95.5" |
| Interior Height | 83" |
| Grey Tank | 80 gal. |
| Sewage Tank | 60 gal. |
| Water Tank | 105 gal. |
| Propane Tank | 22 gal. |
| Furnace | 50,000 btu |

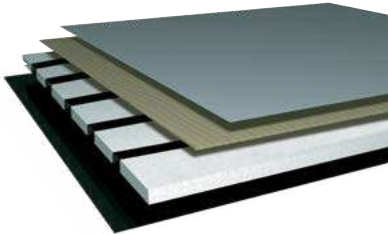


Quality You Can Feel

Like a fine home, the 2021 Mountain Aire is framed 16 inches on center, and is covered by a fiberglass roof with walkable decking and an integrated gutter rail.

BASEMENT

- Cargo Liner
- 3/8" Floor Decking
- 1 1/4" Bead Foam
- Galvanized Sheetting (Prevents Distortion)



| FLOOR PLAN | ENGINE HP | AXLE RATIO | FUEL CAP. | WHEEL BASE | FRONT GAWR | REAR GAWR | TAG GAWR | GVWR | GCWR | APP. UVW | APP. NCC |
|------------|-----------|------------|-----------|------------|------------|-----------|-----------|-----------|-----------|-----------|-----------|
| 4102 | 500 | 4.3 | 150 gal. | 246+TA | 20000 lb. | 20000 lb. | 14000 lb. | 54000 lb. | 69000 lb. | 44100 lb. | 9900 lb. |
| 4118 | 500 | 4.3 | 150 gal. | 246+TA | 20000 lb. | 20000 lb. | 14000 lb. | 54000 lb. | 69000 lb. | 43100 lb. | 10900 lb. |
| 4533 | 500 | 4.3 | 150 gal. | 294+TA | 20000 lb. | 20000 lb. | 14000 lb. | 54000 lb. | 69000 lb. | 45500 lb. | 8500 lb. |
| 4535 | 500 | 4.3 | 150 gal. | 294+TA | 20000 lb. | 20000 lb. | 14000 lb. | 54000 lb. | 69000 lb. | 45500 lb. | 8500 lb. |
| 4543 | 500 | 4.3 | 150 gal. | 294+TA | 20000 lb. | 20000 lb. | 14000 lb. | 54000 lb. | 69000 lb. | 45500 lb. | 8500 lb. |
| 4551 | 500 | 4.3 | 150 gal. | 294+TA | 20000 lb. | 20000 lb. | 14000 lb. | 54000 lb. | 69000 lb. | 45300 lb. | 8700 lb. |
| 4583 | 500 | 4.3 | 150 gal. | 294+TA | 20000 lb. | 20000 lb. | 14000 lb. | 54000 lb. | 69000 lb. | 45200 lb. | 8800 lb. |

The content in our literature depicts and describes products that are subject to change. For the most recent images and information, please visit [NewmarCorp.com](#).

Lengths, heights, widths, and dry weights are approximate. Weight will vary based on optional equipment added to the above base weight.

- GAWR:** Gross Axle Weight Rating is the maximum permissible weight for an axle.
- GVWR:** Gross Vehicle Weight Rating is the maximum permissible weight for a fully loaded motor coach.
- GCWR:** Gross Combination Weight Rating is the value specified by the manufacturer of the vehicle as the maximum allowable loaded weight of this motor coach and any towed trailer or towed vehicle.
- UVW:** Unloaded Vehicle Weight is the weight of this motor coach as built at the factory with full fuel, engine oil, and coolants. Does not include cargo, fresh water, propane gas, or dealer-installed accessories.

NCC: Net Carrying Capacity is the maximum weight of all occupants, including the driver, personal belongings, food, fresh water, waste water, propane gas, tools, tongue weight of towed vehicle, dealer-installed accessories, etc., that can be carried by the motor coach.

Specifications supplied by the chassis manufacturer.

Mountain Aire R-Values:

- Roof R-Value = 24
- Sidewall R-Value = 11
- Floor R-Value = 16
- Basement R-Value = 4

Features and Options



EXTERIOR

EXTERIOR FEATURES

- Full-Paint Masterpiece™ Finish with Cut & Buff and Beta-Fusion Protection on Front Cap
- Convex Exterior Mirrors with Remote Control, Defrost, Turn Signals and Side View Cameras
- Chrome Power Baggage Door Locks, Keyless Entrance Door with Touch Pad and Doorbell
- Entrance Door with Automatic Step
- Rear Hitch for Towing Car
- Assist Handle at Entrance Door
- Mud Flaps
- Rear Protective Tow Guard with Stainless Steel Newmar Name Cutout
- Undercoating
- Hydraulic Leveling Jacks
- Stainless Steel Exterior Trim Pieces and Entrance Door Kick Panel
- Hammock Backer
- Storage Bins in Pegboard Compartment

OPTIONS

- Patio Hammock Package
- Stainless Steel Trim Kit for Exterior Compartment Doors
- Flagpole Bracket
- Large Storage Tray with Access from One Side
- Pass-through Storage Tray with Access from Either Side
- Power Pass-through Storage Tray with Access from Either Side

CONSTRUCTION FEATURES

- Fiberglass Roof and Integrated Gutter Rail
- Gelcoated Fiberglass Exterior Sidewalls, Front and Rear Caps
- Aluminum-Frame Sidewalls & Roof Construction, 16" on Center
- 5/8" Foam Insulation Laminated in Sidewalls & Ceiling
- Polar Pak R19 Batten Insulation on Roof
- Automatic Mechanical Lock Arms on Non Hydraulic Slideout Rooms-Paddle Style
- Egress Door with Ladder System

WINDOWS, AWNINGS & VENTS

- Frameless Double-Pane Tinted Safety Glass Windows
- Fan-Tastic® Vent with Rain Sensor in Kitchen, Bathroom and Enclosed Stool Room
- Hardwood Louvered Cover on Fan-Tastic® Vent in Kitchen
- Skylight Above Shower*

| |
|--|
| Girard® Package-Two Nova Side Awnings, Slideout Covers, Entrance Door & Power Window Awnings |
| One-piece Tinted Windshield |
| Driver Side Power Window |
| Large Non-Ventilated Living Room and Dinette Windows |
| OPTIONS |
| Bunk Windows* |
| Kitchen Window |

CHASSIS FEATURES

| |
|---|
| Spartan® K3 Tag Axle 500 Hp on 41' Floor Plans |
| Phone and Radio Controls on Steering Wheel on Spartan® Chassis |
| Air Leveling System |
| Aluminum Wheels |
| Electronic Chassis Information Center in Dash |
| Electronic Stability Control |
| Cruise Control |
| Comfort Drive™ Steering with Power Column & Adjustable Control |
| Recessed Fuel Fills with Crossover to Fill from Either Side |
| Back-Up Alarm |
| Anti-lock Braking System |
| Chassis Battery Disconnect |
| Automatic Headlights ON/OFF |
| Push-button Engine Start |
| Glass Dash Instrument Panel |
| OnGuard™ Collision Mitigation Adaptive Cruise System with Adj. Following Distance Control on Spartan® Chassis |
| Tire Pressure Monitoring on Tag Axle Chassis |
| Mobileye® Lane Tracking and Lane Departure Warning System |
| Spartan® K3, Tag Axle, 500Hp, 45' Mountain Aire |
| OPTIONS |
| Curt Spectrum Integrated Brake Control on Spartan® Chassis |

AIR CONDITIONING & HEATING

| |
|--|
| Three 15M Penguin™ Heat Pump Central Air Conditioners with Remote Control Thermostat |
| Hydronic Zone Diesel Heat with Continuous Hot Water |
| Dash Heater and Air Conditioner |
| Driver & Passenger Dash Overhead Ventilation System |

| |
|---|
| Wall-Mounted Sensors for Heating and Air Conditioning |
| Roof Air Conditioning Drainage System |
| Electric Radiant Heat Installed Below Main Floor Tile |

ELECTRICAL FEATURES

| |
|---|
| 12.5 kW Cummins Onan® Diesel Generator |
| 50 Amp Electrical Service with Flexible Cord with Automatic Transfer Switch |
| Six 6-Volt House Batteries |
| Battery Disconnect Switch for House Battery |
| 10 Watt Solar Panel to Charge Chassis Battery |
| 3000 Watt True Sine Inverter |
| 12 Volt Auxiliary Receptacle on Dashboard |
| Emergency Engine Start Switch |
| Engine Block Heater |
| Energy Management System |
| Exterior Security Lights |
| Mid-ship Side Turn Signals |
| LED Lights Recessed in Ceiling and Underneath Overhead Cabinets |
| Accent Lights in Feature Ceiling, Slideout Fascia Trim and Lambrequins |
| LED Lighting in Pull-Out Pantry, Kitchen and Bathroom Base Cabinets |
| LED Lights in Exterior Storage Compartments on Automatic Switches |
| LED Lights Installed Under Door Side Slideouts |
| Lights in Wardrobes |
| Manually Operated Hold-To-Run Slideout Switch |
| Automatic Generator Start on Low Battery or Temperature Setting |
| Cable TV Connection |

| |
|---|
| Interior Courtesy Lights |
| USB Charger at Dinette & Bedroom Nightstand |
| USB Outlet at Dash for Driver Use |
| Power Rewind Wheel with 50' Cord* |
| Recessed Docking Lights |
| KIB Touch Screen Interior Light and Shade Controls |
| Secondary Multiple Touch Screen in Bedroom |
| SilverLeaf Multiplex Electrical Wiring System |
| Solar Prep with Six Gauge Wire from Roof to House Battery |
| Spare Fuses in Chassis and House Fuse Panels |
| Wireless Phone Charger Pad in Driver Area |

| |
|---|
| Wireless Charging Mat Built into Passenger Console |
| 110 Volt Recept in Bed Overhead with Two Pass-Through Ports |
| 110 Volt/USB Outlet at Head of Each Bunk* |
| Dimmable with Adjustable Aim Reading Lights at Head of Bed |
| Transfer Switch with Surge Protector |
| OPTIONS |
| LED Strip Lighting Installed Under Off Door Side Slideouts |
| Four Flexible 100 Watt Solar Panels on Roof |

PLUMBING & BATH FEATURES

| |
|---|
| Demand Water System |
| Sewage Holding-Tank Rinse |
| Dometic® 321 China Bowl Stool or Macerator Stool* |
| Aqua Miser® Shower System |
| Tiled Shower Walls and Floors with Glass Door |
| Soap Dispenser in Shower |
| Fold-Down Shower Seat |
| Water Filter for Entire Unit |
| Exterior Shower |
| Auto Fill for Fresh Water Tank |
| Power Water Hose Reel |
| Hot Water Line to Generator Area* |
| OPTIONS |
| Assist Handle in Shower |
| RV Sanicon Turbo System |

INTERIOR FEATURES

| |
|--|
| Designer Feature Ceiling and Cathedral Ceiling with Added Height on Rear-bath Floor Plans* |
| Lighted Mirror in Bathrooms |
| Tile Floor in Kitchen, Bathroom, Bedroom and Living Area |
| Auto Motion Power Shades and Lambrequins |
| Auto Motion Power Shades for Windshield and Driver/Passenger Side Windows |
| Hardwood Window Sills |
| Hardwood Raised Panel Interior Passage Doors |
| Flush Handles on Swinging Bath Doors |
| Interior Assist Handle at Main Entry Door |



| |
|---|
| Quilted Bedspread with Accent Pillows |
| Safe Located in Bedroom Wardrobe |
| Wastebasket in Kitchen Base Under Sink |
| Maximized Shoe Storage Shelves Recessed in Rear of Wardrobe |

CABINETS & FURNITURE

| |
|---|
| Bermuda Glazed Maple Hardwood Cabinets with Raised Panel Doors with Matte Finish |
| Concealed Hinges on Cabinet Doors |
| Super Polished Solid Surface Countertop in Kitchen with Undermounted Stainless Steel Sink and Sink Covers |
| Lifts on Bed Top |
| Passenger Seat Work Station |
| Super Polished Solid Surface Countertop in Bathroom and Bedroom |
| Pull-Out Pantry Shelves |
| Soft-close Cabinet Doors* |
| Drawers with Dovetail Sides with Self Closing Full Extension Ball Bearing Guides |
| Villa Ultraleather® Sofa and Driver/Passenger Seats with Integrated Seat Belts |
| Driver Seat with Vibration for Haptic Feedback |
| Heated Front Seats with Power-Lumbar, Recline, Footrest & Queen Sized Passenger Seat |
| Push-to-release Drawer Slides in Pantry |
| Plush Pillow Top Mattress* |
| Cedar Paneling in Bedroom Wardrobe |
| Extended Rotation Concealed Hinge for Washer/Dryer Cabinet Door |
| Side Folding Hide-A-Bed Sofa with Memory Foam Mattress* |
| Chaise Lounge-Off Door Side, Dormi Sofa-Door Side* |
| Chaise Lounge-Off Door Side, Hide-A-Bed Sofa with Memory Foam Mattress-Door Side* |
| Full Height Wardrobes Beside Lav* |
| Mesh Cell Phone Holder at Each Bunk Bed* |
| Molded Silverware Divider Tray |

OPTIONS

| |
|---|
| Carmel Glazed Maple Hardwood Cabinets with Raised Panel Doors with High Gloss or Matte Finish |
| Bermuda Glazed Maple Hardwood Cabinets with Raised Panel Doors-High Gloss |
| Wicker Glazed Maple Hardwood Cabinets with Raised Panel Doors-High Gloss or Matte Finish |
| Sable Maple Hardwood Cabinets with Raised Panel Doors-High Gloss or Matte Finish |
| Dinette with Rollaway Table |
| Buffet/Dinette with Rollaway Table, Two Fixed/Two Folding Chairs |

| |
|--|
| Sleep Number® R5 Radius Corner Air Mattress |
| Power Extenda Flex Dinette |
| Buffet Dinette |
| Combination Desk/Dinette with Rollaway Table, Two Fixed/Two Folding Chairs |
| Combination Desk/Dinette with Buffet Table, Two Fixed/Two Folding Chairs |
| Power Incline Retracting Bed Base with Sleep Number® R5 Air Mattress |
| Power Incline Head of Bed with Sleep Number® R5 Air Mattress |
| Euro Booth Dinette and Two Folding Chairs |
| Two Recliners with Lampstand and Reading Lights |
| 74" Hide-A-Bed with Two Ottomans and Jackknife Sofa |
| 84" Hide-A-Bed with Two Ottomans and Jackknife Sofa |
| 87" Power Extenda L with Chaise Lounge |
| 87" Side Folding Hide-A-Bed with Two Ottomans and Jackknife Sofa |
| Chaise Lounge/Euro Booth Dinette Ensemble with Two Table Leaves & Two Folding Chairs |
| Fireplace with 50" 4K TV on Lift |
| Powered Theater Seating 87" with Reading Lights and Lighted Cup Holders |

APPLIANCES

| |
|---|
| Stainless Steel 30" Convection Microwave with Recessed Three Burner Gas Cooktop |
| Air Horns |
| Whirlpool® 19.7 Refrigerator |
| Splendide® Two-Piece Stacked Washer/Dryer |
| Dometic® 2.47 Cf. Freezer on Pull-Out Tray in Exterior Baggage Compartment* |
| Dometic® 3.0 Cf Freezer on Pull-Out Tray in Exterior Baggage Compartment* |
| Flush Gas Cooktop Cover of Matching Countertop Material |
| Fireplace in Living Area* |
| Central Vacuum with Tool Kit |
| OPTIONS |
| All Electric Recessed Mount Induction Cooktop and 8 AGM Batteries |
| Dishwasher in Drawer with Stainless Steel Front |

AUDIO, VIDEO & ACCESSORIES

| |
|---|
| Samsung® LED TV and Sony® Blu-ray Disc Player in Living and Bedroom Areas* (TV Sizes Vary Per Floor Plan) |
| Samsung® 43" 4K LED TV in Front Overhead |
| Samsung® 50" 4K LED TV on Televator in Living Area* |



| |
|---|
| Bose® 500 Subwoofer |
| Bose® 700 SoundTouch Soundbar in Living Room |
| Xite Dash Radio, 10" Dual Monitor with Rand McNally Navigation |
| Xite HD 360 Camera System with Predictive Grid Lines and Tri-View Rear Camera |
| Rearview Color Monitor System with Audio |
| Winegard Rayzar Automatic Digital TV Antenna |
| Satellite Dish Prep on Roof |
| Two Bedroom Radio Speakers |
| TV Jack and 110 Volt Recept in Door Side Exterior Storage Compartment |
| Cat 6 TV Cables |
| Infrared Repeater System to Operate Audio/Visual Components |
| WiFiRanger SkyPro Pack Router |
| 10 Bc Fire Extinguisher, Smoke Detector, Propane and Carbon Monoxide Detector |
| Remote Navigation Programming via SD Card |
| OPTIONS |
| Sirius® Satellite Radio Capability (Does Not Include Monthly Subscription) |
| Exterior Entertainment Center in Sidewall with Samsung® 43" 4K LED TV and Soundbar |
| Exterior Entertainment Center in Storage Compartment with Samsung® 43" 4K LED TV & Soundbar |
| Winegard Automatic In Motion Dome Satellite Dish |
| Winegard Automatic Open Face Satellite Dish |
| Winegard Automatic Open Face SWM Satellite Dish |
| Two 19" Skyworth TV/DVD Monitors at each Bunk* |
| Extra Monitor on Passenger Side |
| Rear Camera (2) Prep for Use with Stacker Trailer |
| WiFiRanger Denali/Spruce LTE |
| Universal Toll Module |

*Check with dealership on floor plan availability.

The content in our literature depicts and describes products that are subject to change. For the most recent images and information, please visit NewmarCorp.com.

The Newmar Customer Experience

The Newmar difference goes beyond our industry-leading motor coaches to provide you with an unrivaled ownership experience.



QUALITY FROM THE START

Every Newmar is crafted one at a time by folks who have spent an average of eight years building them. And each coach we assemble must undergo more than 1,000 tests and checks before ever leaving our factory.



CAREFULLY SELECTED DEALERS

We view our dealership network in terms of quality, not quantity. Each of our dealers acts as a partner in our shared mission to exceed your highest of expectations, for an ownership experience that's second to none from day one.



EVERYTHING IN ONE PLACE

As a Newmar owner, you'll find resources specific to your coach through Newgle, an easy-to-use knowledge base that houses everything from user guides to technical support documents.



FRIENDS FOR LIFE

Meet fellow owners through the Newmar Kountry Klub, a top social club for RV travelers that hosts rallies and other special events throughout the U.S. and Canada.



SEAMLESS SERVICE

When you join the Newmar family, we pair you with a dedicated service specialist with expert knowledge of your exact coach. Available 24/7, our service specialists guarantee dealer warranty authorizations within four business hours and ship all in-stock parts the same day, free of charge.



ROCK-SOLID PROTECTION

All models include a one-year/unlimited mileage limited warranty and a five-year, non-transferable structural warranty that covers your coach's superstructure in the event it fails to perform.

Ask your Newmar dealer for more details.



A. ROOF

Fiberglass Roof

Batten Insulation

A/C Ducting

16" on Center Aluminum

Rafter Framing

Kraft Paper Vapor Barrier

5/8" Bead Foam

3/16" Panel

Padded Vinyl Overlay

B. SIDEWALL

Interior Wall Panel

5/8" Bead Foam

Kraft Paper Vapor Barrier

Batten Insulation

Composite One-Piece

Gelcoat Exterior Sidewall

Aluminum Framing

C. FLOOR

Tile

16" on Center Wood Framing

5/8" Floor Decking

Polyethylene Moisture Barrier

Batten Insulation

D. EXTERIOR

15M Penguin™ Heat Pump Central

Air Conditioners

One-Piece Bonded Windshield

Polish Free Aluminum Wheels

Frameless, Double-Pane,

Tinted Safety Glass Windows

Side-Hinged Baggage Doors with

Optional Pull-Out Tray

Our Partners

Newmar Quality Begins with the Company We Keep

You deserve class-leading performance from names you can trust. That's why we only work with suppliers dedicated to providing our customers with unrivaled quality, comfort, and support.



Driven By You

FREIGHTLINER CUSTOM CHASSIS

Freightliner Custom Chassis Corp. (FCCC) is renowned for delivering the industry's best ownership experience through exceptional 24/7 factory-direct support, exceptional ride and handling, and developing high-performance innovations such as DRIVETECH. It's the only RV driving system that prioritizes safety and automotive luxury by putting every command at your fingertips.



SPARTAN RV CHASSIS

Designs, engineers, and assembles by hand each Spartan chassis for the best ride and handling in the industry. Spartan's leading safety ratings and ongoing investment in R&D give Spartan chassis owners superior performance and higher coach resale values. Spartan is American owned and has earned the trust of discerning RV owners based on its premium products and award-winning customer service.



We create chemistry

BASF

A world full of colors! The Coatings Division of BASF develops, produces and markets a high-quality range of innovative and sustainable automotive OEM coatings and automotive refinishes.



INDUSTRIAL FINISHES

Industrial Finishes has supported RV manufacturers for over four decades. The Industrial Finishes paint process delivers uncompromising quality, providing your coach with a true "Masterpiece" finish.



RIVERPARK

RiverPark proudly represents the leading brands in consumer electronics—brands you know and trust to provide exceptional quality and innovative technology. Newmar features Samsung's incredible 4K TVs with Bose soundbars, Xite Infotainment systems featuring Rand McNally Navigation and JBL and Infinity premium audio. Step into a 2021 Newmar and experience dazzling audio and video performance throughout!



Our People Take It Personally

Since Newmar was founded in 1968, our goal has been to build a better RV.

We have always believed that traveling shouldn't mean leaving behind the comforts you enjoy, so our coaches are crafted to be residential-quality homes—complete with handmade cabinetry and designer décors.

Every Newmar is built by hand, one at a time, by men and women who have dedicated years to creating superior-quality coaches that surpass their mass-produced competition.

We don't want to simply ask you to trust us when we talk about the Newmar difference. We want to prove it, every single time you hit the road. Because we take pride in the responsibility of designing, engineering, and constructing your motorhome.

And we know you'll be proud driving one on the way to your next destination.

When You Know the Difference.



Newmar Corporation | 355 N Delaware St | PO Box 30 | Nappanee, IN 46550-0030 | 574-773-7791 | Fax 574-773-2895
NewmarCorp.com

**LaMESA REC
VAN**

LaMesaRV.com
800-496-8778